

Zhang + Liang (1993)

果蝇亚属一新种

(双翅目:果蝇科)

张文霞 梁醒财

(中国科学院昆明动物研究所,昆明 650107)

整理鉴定武陵山生物资源考察所采果蝇科标本,发现果蝇亚属 (*Drosophila*) 一新种。现记述如下。模式标本保存于中国科学院昆明动物研究所。

棒果蝇 *Drosophila* (*Drosophila*) *fustiformis* 新种(图1—3)

♂: 体长约3.5mm, 翅长约3.0mm。

头部: 复眼红色,被微毛。触角第二节黄色,具2根长刚毛;第三节亦黄色;触角芒分枝毛背侧5,腹侧2,端叉大。下颚须黄色,顶端及外侧亚中部具2根长刚毛。腹外侧散生几根小刚毛。单眼三角区及眶区黄色,额棕黄色,单眼内侧棕色。单眼鬃长,外伸,具几对小刚毛。额从侧面观银白色,具额毛。额为头宽的1/2。颜浅黄色,鼻瘤下部高。口上片棕色。颊黄色,高为复眼最大直径的1/6。orb₂与orb₁相比稍近内顶鬃。orb₂位于orb₁与orb₃的中央。orb₂/orb₁ = 1/4, orb₃/orb₁ = 5/6。髯粗长, or₂/or₁ = 3/4。

胸部: 背板、侧板及小盾片黄色。肩鬃2,几乎等长。ac8列。前背中鬃/后背中鬃=0.6。前背中鬃与后背中鬃间的距离为两前背中鬃间距离的1/2。小盾片前鬃平行或外伸,后鬃内伸且交叉。SI = 0.47, 腹侧板中鬃亦长。

足: 黄色。前足股节内侧具约10黑棘齿。♂前足基跗节及第二分跗节粗,内侧具密集黄色绒毛,其余各分跗节细。中足具端鬃,前、中、后3对足均具亚端鬃。中、后足基跗节长为其余各分跗节长之和。

翅: 透明,后横脉云状。C₁-鬃2根,上面一根更长。R₄₊₅与M₁平行。C = 3.5, 4C = 0.6, 4V = 1.27, 5X = 1.0, Ac = 2.0, C3F = 2/5—1/2。平衡棒浅黄白色。

腹部: 黄色,背板各节具中间断开且不达侧缘的后缘棕色横带。

围阳体(图1): 生殖弓下端斜截形,具2根短鬃毛。被微毛。上端具约3根长鬃,下端具约5根长鬃。肛板亦被微毛及鬃,肛腹端具小簇毛。抱器长,齿短,约由7齿组成齿列。

阳体(图2,3): 阳茎黄色,顶端似喇叭状,后侧面具一对骨化强的长细突,亚端至亚基具一窄条骨化强的区域。后阳基侧突(?)透明,圆棒状,被微毛。具生殖腹板突及一对亚中刺。前阳基侧突与生殖腹板融合,具2感觉毛。

正模♂,湖南省桑植县天平山,海拔1400m,1988. VII. 22。梁醒财采。副模2♂♂,同上。

鉴别特征：该种属伊米果蝇 *immigrans* 种组，伊米果蝇亚种组，与拟红缝果蝇 *Drosophila (Drosophila) ruberrimoides* Zhang et Gan 有类似的后阳基侧突(?)的结构。但阳茎端又似缅甸果蝇 *Drosophila (Drosophila) burmae* Toda 呈喇叭状。

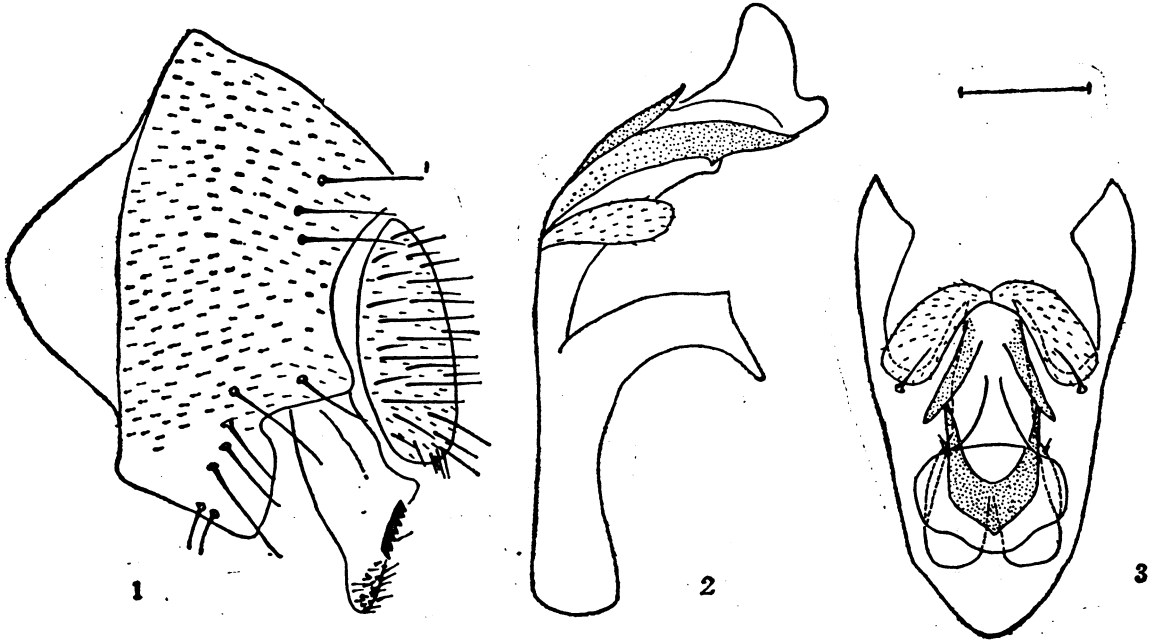


图1—3 棒果蝇 *Drosophila (Drosophila) fustiformis* sp. nov.
1. 围阳体; 2. 阳茎(侧面观); 3. 阳体(正面观)。(比例=0.1 mm)

参 考 文 献

- 张文霞、甘运兴 1986 昆明果蝇八新种描述(双翅目：果蝇科)。动物学研究 7(4): 351—365。
Toda, M. J. 1986 *Drosophilidae* (Diptera) in Burma. II The *Drosophila immigrans* species-group of the subgenus *Drosophila*. *Konryu*, 54: 634—653。
Zhang Wen-xia and M. J. Toda 1988 The *Drosophila immigrans* species-group of the subgenus *Drosophila* (Diptera: *Drosophilidae*) in Yunnan, China. *Zool. Sci.*, 5: 1095—1103。

A NEW SPECIES OF *DROSOPHILA* (DIPTERA: DROSOPHILIDAE)

ZHANG WEN-XIA LIANG XING-CAI

(Kunming Institute of Zoology, Academia Sinica, Kunming 650107)

The present paper describes a new species, *Drosophila (Drosophila) fustiformis* Zhang et Liang, which belongs to *immigrans* species-subgroup. It is allied to *Drosophila (Drosophila) ruberrimoides* Zhang et Gan, especially in having similar structure of gonopod (?). Aedeagus distally trumpet-like resembled *Drosophila (Drosophila) burmae* Toda. But it differs from them in the pattern of ♂ terminalia (figs. 1—3) in detail. Epandrium pubescent, with *ca.* 3 setae in upper part, *ca.* 5 in lower part, ventral margin truncate, with *ca.* 2 small setae. Cercus oval, pubescent and setigerous, with tuft of short stout setae at caudoventral corner. Surstylus slender, with *ca.* 7 primary presetae in nearly straight row on submedia to upper distal margin. Caudoventrally with several small setae. Aedeagus yellow, distally expanded like trumpet, dorsolaterally with 1 pair of slender, acute, sclerotized projections, laterally with long sclerotized area from submedial to subapical part. Gonopod (?) transparent, club-shaped with small hairs. Hypandrium with a pair of paramedian spines, hypandrial process elongate, apically somewhat pointed. Parameres fused to hypandrium, with *ca.* 2 sensilla.

Holotype ♂, Tian Ping Mountain, Sangzhi County, Hunnan Province, 1400 m, July 22, 1988. Collected by Liang X. C.. Paratypes: 2♂♂, ditto.

All the types are deposited in Kunming Institute of Zoology, Academia Sinica.